

## Thank you!

We're happy that you have chosen the Finom light, designed by Esa Vesmanen.

These high quality Finom lights are made in Finland out of durable Finnish birch plywood.

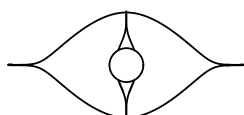
Contents of the package:

Lampshade, wooden shade holder, bulb, lamp holder and cable, shade ring.

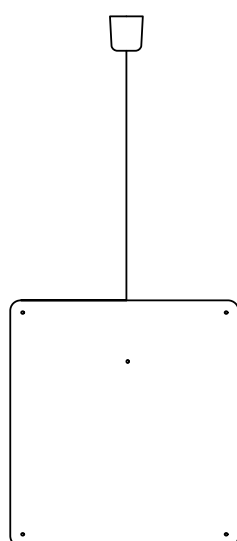
Size of the assembled product in centimeters:



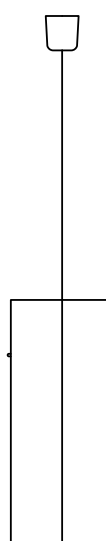
• 45 •



• 20 •



• 48 •



## Instructions for assembly:

See also the Finom lights assembly videos:  
<http://finomlights.com/video/>

Carefully remove the parts from the package.

1. Spread part **A** (the wooden shade holder, inner part) carefully according to the picture and place it around the lamp holder. Rotate part **B**, the ring so that it locks the wooden shade holder to the lamp holder. You can add the LED bulb right now or later.

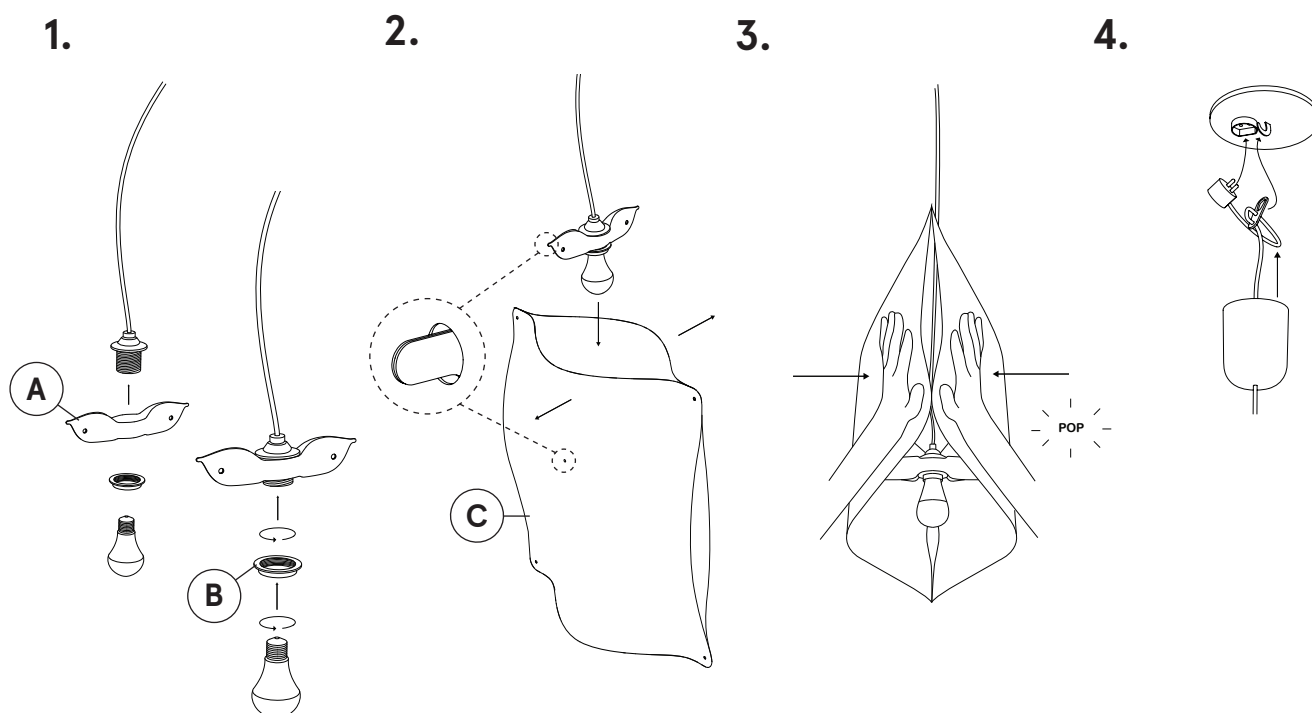
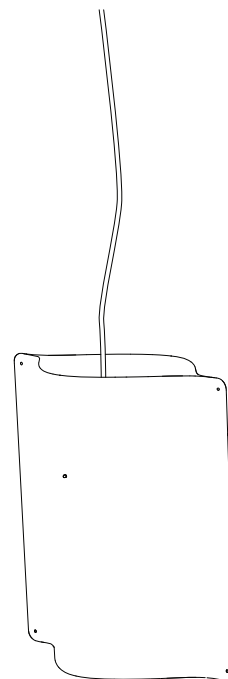
2. Spread the shade **C** from the middle, just enough to place the wooden shade holder inside the shade. Make sure that the ends of the shade holder go through the holes in the shade.

3. Press gently with both hands at the vertical edge of the shade so that the two sheets come together. Do this for the both vertical sides. Finom lamp shade will give a smooth "pop" sound when the sheets are pushed together. The sound is normal and the light will not break of it.

4. Attach the light to the ceiling using the cable hook and the electric plug. Then lift up the plastic cover over the plug.

The light is now ready to use!

We recommend that you use energy saving LED light bulbs with an output of 9-11 Watts and colour temperature of 3,500-4,200 Kelvin.



## Thank you!

We're happy that you have chosen the Finom light, designed by Esa Vesmanen.

These high quality Finom lights are made in Finland out of durable Finnish birch plywood.

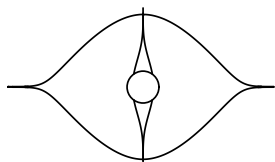
Contents of the package:

Lampshade, wooden shade holder, bulb, lamp holder and cable, shade ring.

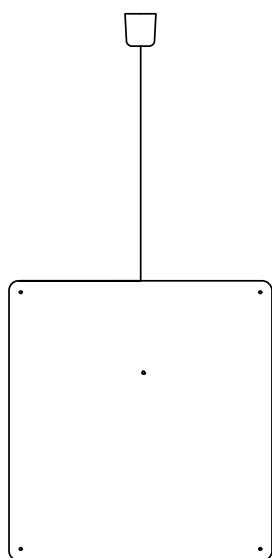
Size of the assembled product in centimeters:



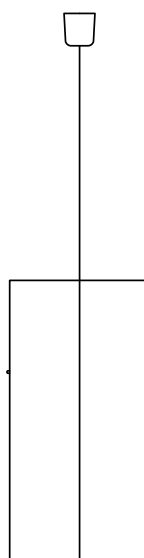
• 55 •



• 30 •



• 58 •



## Instructions for assembly:

See also the Finom lights assembly videos:  
<http://finomlights.com/video/>

Carefully remove the parts from the package.

1. Spread part **A** (the wooden shade holder, inner part) carefully according to the picture and place it around the lamp holder. Rotate part **B**, the ring so that it locks the wooden shade holder to the lamp holder. You can add the LED bulb right now or later.

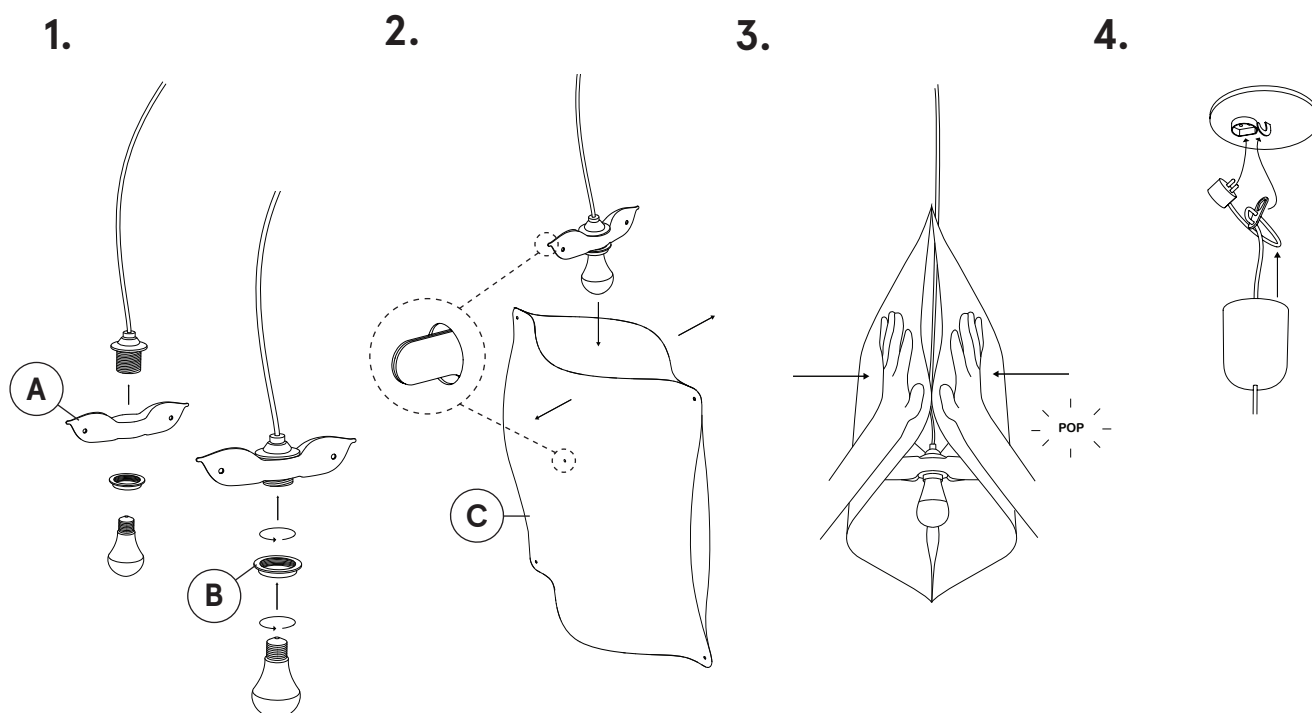
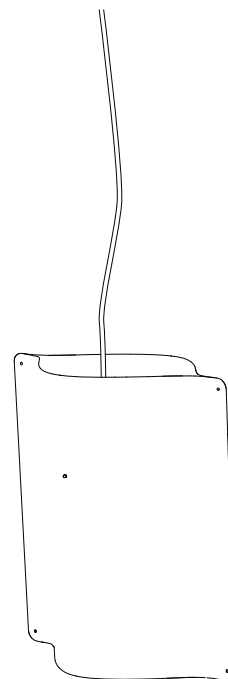
2. Spread the shade **C** from the middle, just enough to place the wooden shade holder inside the shade. Make sure that the ends of the shade holder go through the holes in the shade.

3. Press gently with both hands at the vertical edge of the shade so that the two sheets comes together. Do this for the both vertical sides. Finom lamp shade will give a smooth "pop" sound when the sheets are pushed together. The sound is normal and the light will not break of it.

4. Attach the light to the ceiling using the cable hook and the electric plug. Then lift up the plastic cover over the plug.

The light is now ready to use!

We recommend that you use energy saving LED light bulbs with an output of 9-11 Watts and colour temperature of 3,500-4,200 Kelvin.



## Thank you!

We're happy that you have chosen the Finom light, designed by Esa Vesmanen.

These high quality Finom lights are made in Finland out of durable Finnish birch plywood.

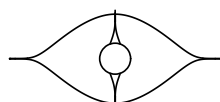
Contents of the package:

Lampshade, wooden shade holder, bulb, lamp holder and cable, shade ring.

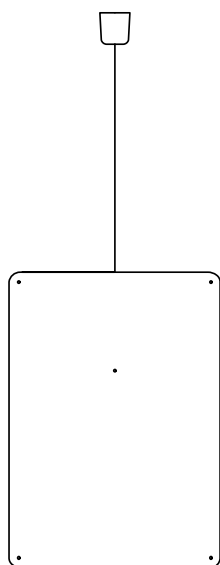
Size of the assembled product in centimeters:



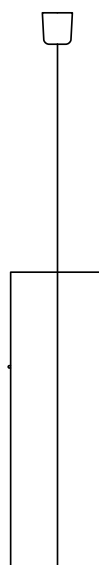
• 42 •



• 20 •



• 62 •



## Instructions for assembly:

See also the Finom lights assembly videos:  
<http://finomlights.com/video/>

Carefully remove the parts from the package.

1. Spread part **A** (the wooden shade holder, inner part) carefully according to the picture and place it around the lamp holder. Rotate part **B**, the ring so that it locks the wooden shade holder to the lamp holder. You can add the LED bulb right now or later.

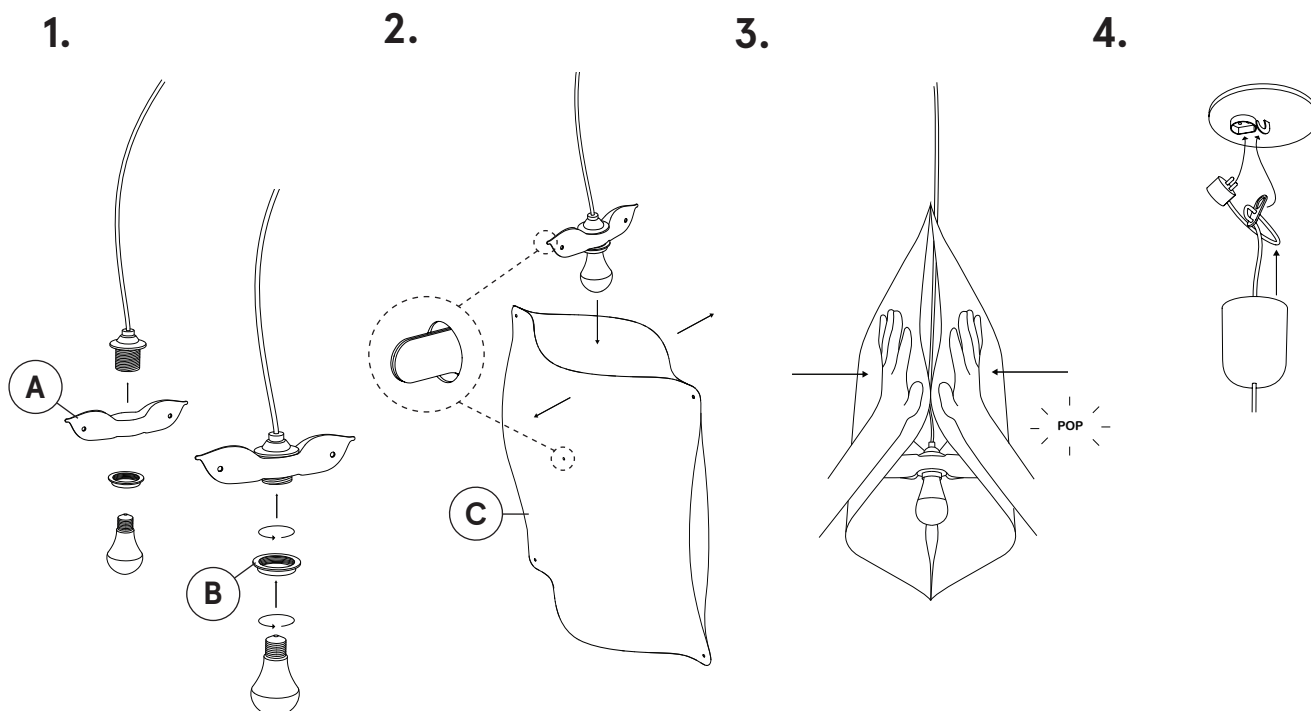
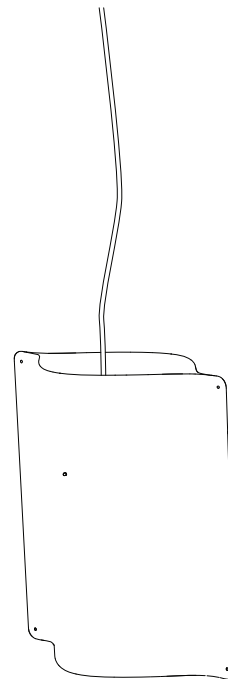
2. Spread the shade **C** from the middle, just enough to place the wooden shade holder inside the shade. Make sure that the ends of the shade holder go through the holes in the shade.

3. Press gently with both hands at the vertical edge of the shade so that the two sheets come together. Do this for the both vertical sides. Finom lamp shade will give a smooth "pop" sound when the sheets are pushed together. The sound is normal and the light will not break of it.

4. Attach the light to the ceiling using the cable hook and the electric plug. Then lift up the plastic cover over the plug.

The light is now ready to use!

We recommend that you use energy saving LED light bulbs with an output of 9-11 Watts and colour temperature of 3,500-4,200 Kelvin.



## Thank you!

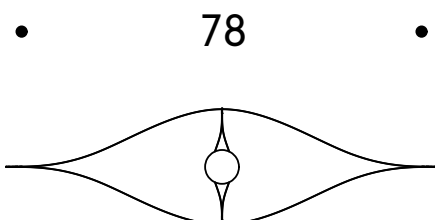
We're happy that you have chosen the Finom light, designed by Esa Vesmanen.

These high quality Finom lights are made in Finland out of durable Finnish birch plywood.

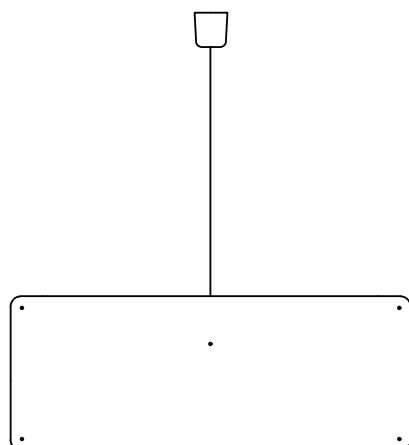
Contents of the package:

Lampshade, wooden shade holder, bulb, lamp holder and cable, shade ring.

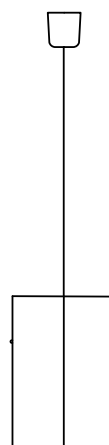
Size of the assembled product in centimeters:



• 20 •



• 30 •



## Instructions for assembly:

See also the Finom lights assembly videos:  
<http://finomlights.com/video/>

Carefully remove the parts from the package.

1. Spread part **A** (the wooden shade holder, inner part) carefully according to the picture and place it around the lamp holder. Rotate part **B**, the ring so that it locks the wooden shade holder to the lamp holder. You can add the LED bulb right now or later.

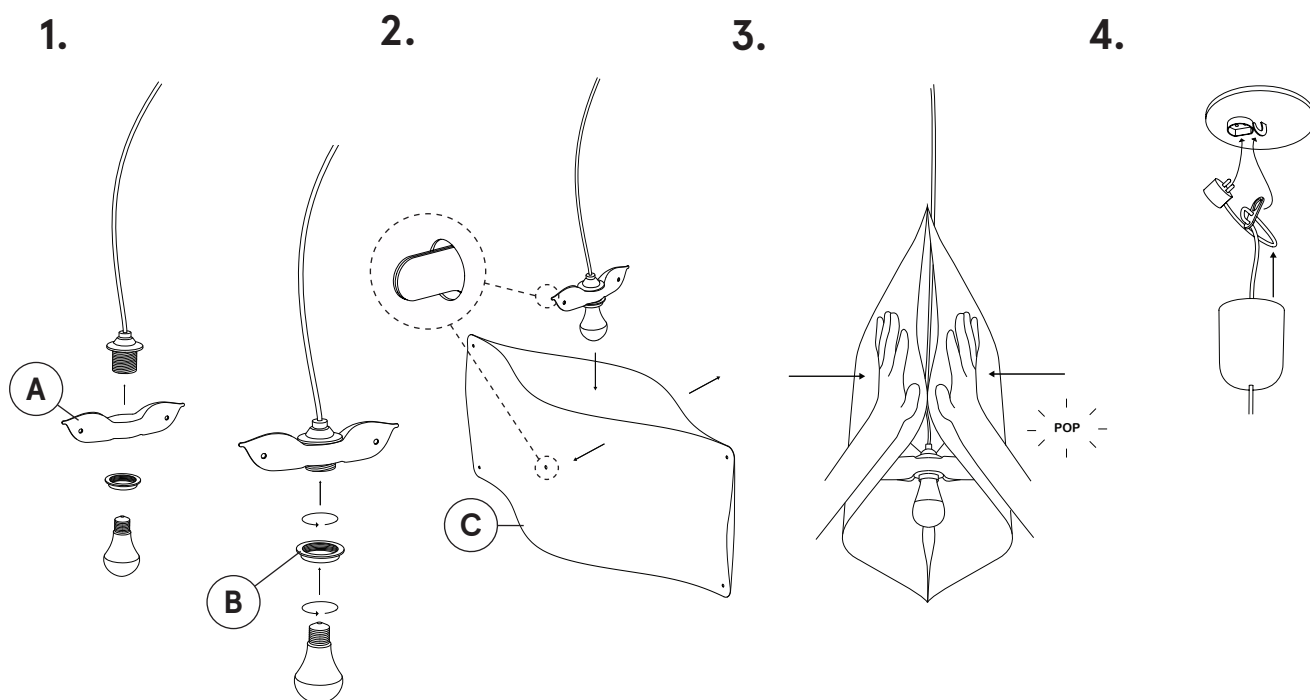
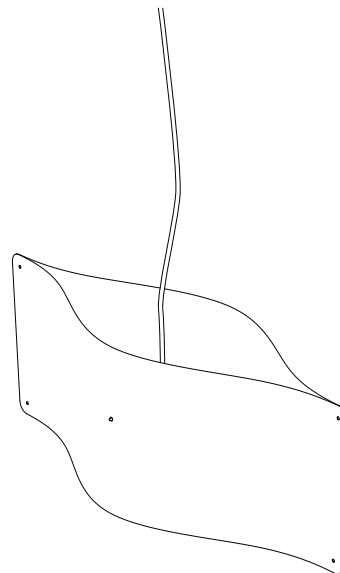
2. Spread the shade **C** from the middle, just enough to place the wooden shade holder inside the shade. Make sure that the ends of the shade holder go through the holes in the shade.

3. Press gently with both hands at the vertical edge of the shade so that the two sheets come together. Do this for the both vertical sides. Finom lamp shade will give a smooth "pop" sound when the sheets are pushed together. The sound is normal and the light will not break of it.

4. Attach the light to the ceiling using the cable hook and the electric plug. Then lift up the plastic cover over the plug.

The light is now ready to use!

We recommend that you use energy saving LED light bulbs with an output of 9-11 Watts and colour temperature of 3,500-4,200 Kelvin.





## Thank you!

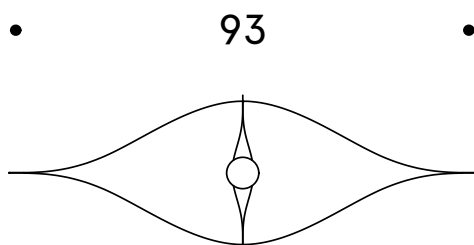
We're happy that you have chosen the Finom light, designed by Esa Vesmanen.

These high quality Finom lights are made in Finland out of durable Finnish birch plywood.

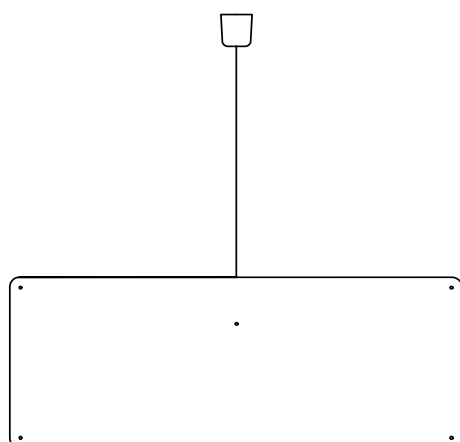
Contents of the package:

Lampshade, wooden shade holder, bulb, lamp holder and cable, shade ring.

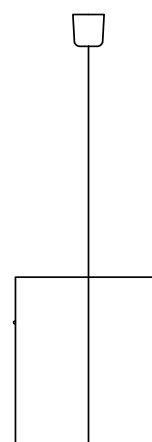
Size of the assembled product in centimeters:



• 30 •



• 36 •



## Instructions for assembly:

See also the Finom lights assembly videos:  
<http://finomlights.com/video/>

Carefully remove the parts from the package.

1. Spread part **A** (the wooden shade holder, inner part) carefully according to the picture and place it around the lamp holder. Rotate part **B**, the ring so that it locks the wooden shade holder to the lamp holder. You can add the LED bulb right now or later.

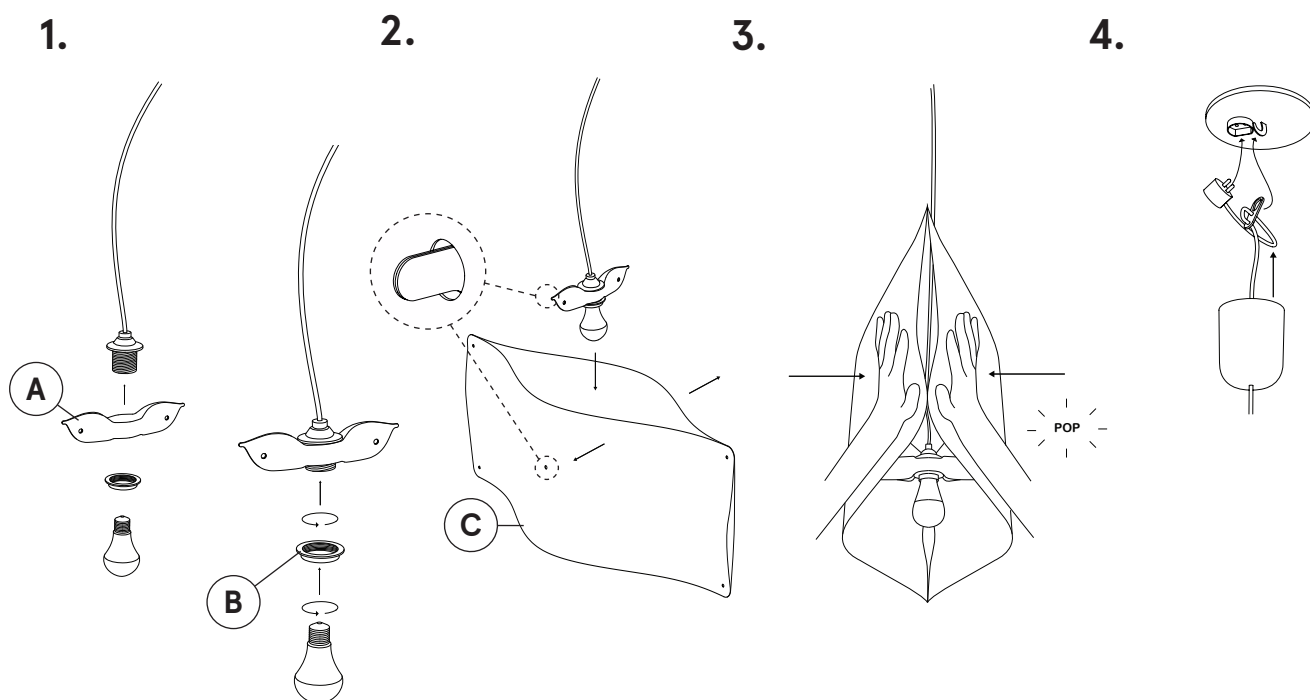
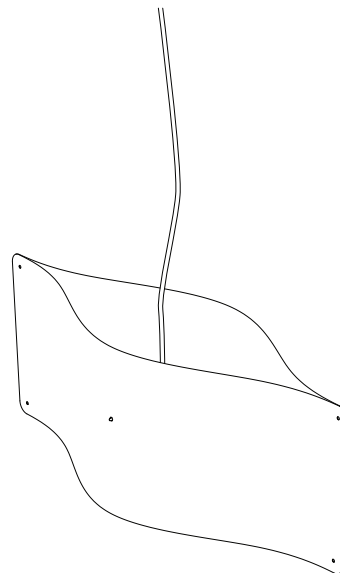
2. Spread the shade **C** from the middle, just enough to place the wooden shade holder inside the shade. Make sure that the ends of the shade holder go through the holes in the shade.

3. Press gently with both hands at the vertical edge of the shade so that the two sheets come together. Do this for the both vertical sides. Finom lamp shade will give a smooth "pop" sound when the sheets are pushed together. The sound is normal and the light will not break of it.

4. Attach the light to the ceiling using the cable hook and the electric plug. Then lift up the plastic cover over the plug.

The light is now ready to use!

We recommend that you use energy saving LED light bulbs with an output of 9-11 Watts and colour temperature of 3,500-4,200 Kelvin.



## Thank you!

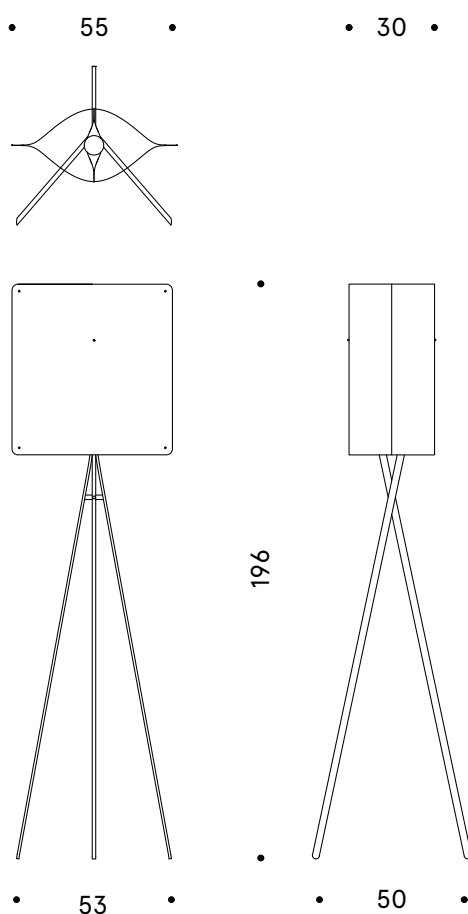
We're happy that you have chosen the Finom light, designed by Esa Vesmanen.

These high quality Finom lights are made in Finland out of durable Finnish birch plywood.

Contents of the package:

Lampshade, wooden shade holder, bulb, lamp holder and cable, two screws, shade ring, axis, login pin, three legs .

Size of the assembled product in centimeters:



## Instructions for assembly:

See also the Finom lights assembly videos:  
<http://finomlights.com/video/>

Carefully remove the parts from the package.

1. Carefully spread the wooden shade holder **C** according to the picture and place it around the lamp holder **A**.

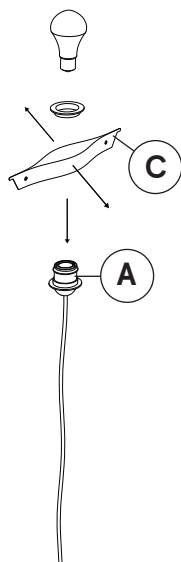
2. Rotate part **B** so that it locks the wooden shade holder to the lamp holder. Remove screws **D** from the package, open them and attach them through the holes in the wooden shade holder. The legs of the light will be attached using them.

You can add the bulb **E** right now or later.

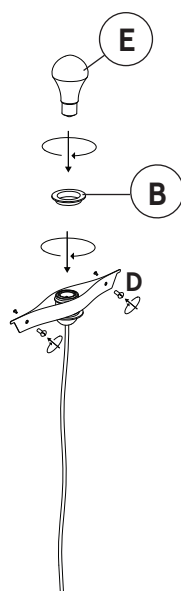
3. The assembled inner part of the shade now looks like this.

4. Attach axis **F** to the leg **H**. Lock the plug into place by inserting locking pin **G** through both the leg and the plug.

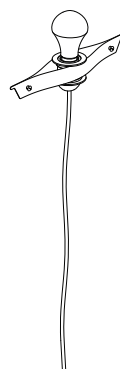
1.



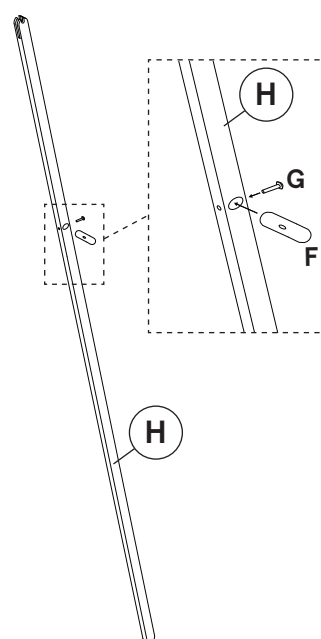
2.



3.



4.



## Instructions for assembly:

5. Carefully open the opening legs I according to the picture. In the legs I there is a slot where the axis will slide up to the hole in the leg H. Now the tripod leg is ready for the inner part of the lamp.

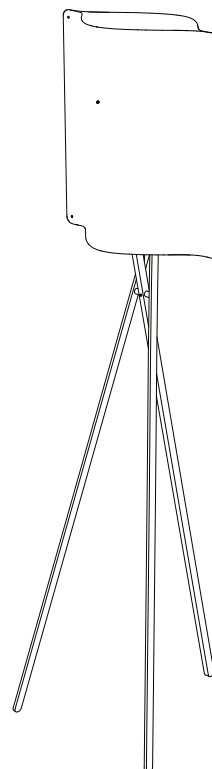
6. Next attach the shade's inner part, which you assembled earlier, into the grooves of the top parts of the tripod legs. The shade holder goes into the grooves and the screws go into the holes.

7. Open the shade J enough to place the legs and inner part inside to it, so that the ends of the shade holder K go through the holes in the shade.

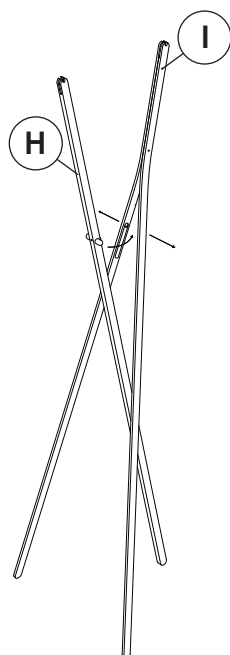
8. Press gently with both hands at the vertical edge of the shade so that the two sheets comes together. Do this for the both vertical sides. Finom lamp shade will give a smooth "pop" sound when the sheets are pushed together. The sound is normal and the light will not break of it.

You can now use the light!

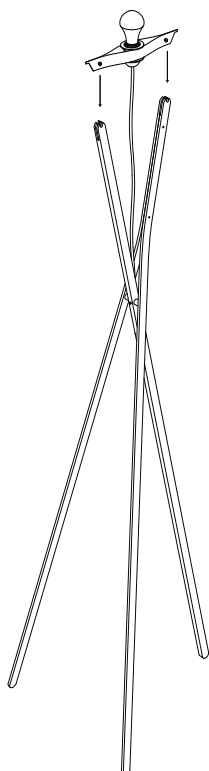
We recommend that you use energy saving fluorescent lights or LED light bulbs with an output of 3,500-4,200 Kelvin.



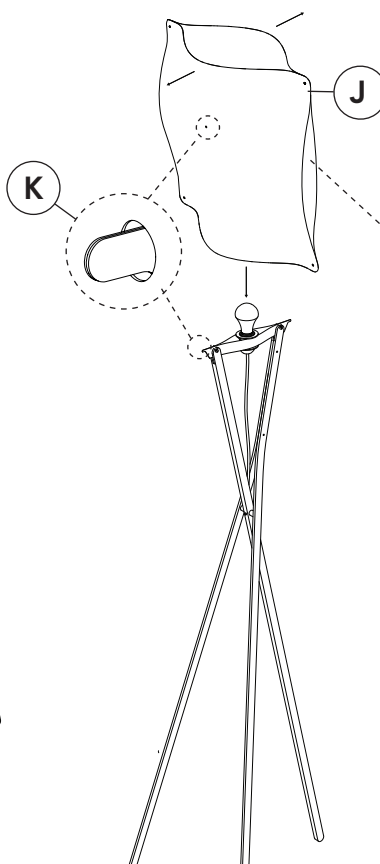
5.



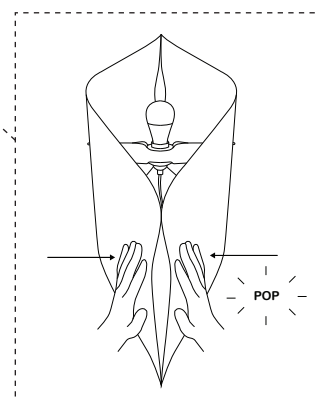
6.



7.



8.



CE  IP20

## Thank you!

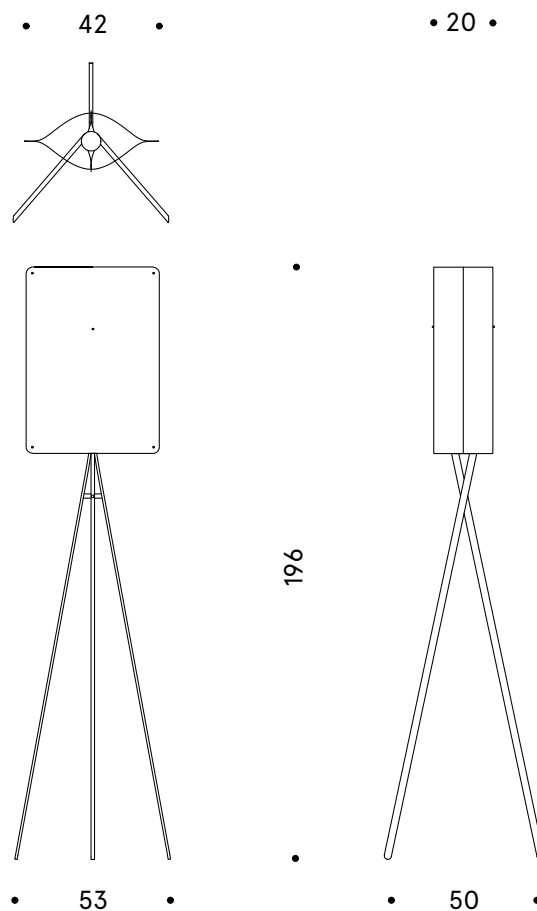
We're happy that you have chosen the Finom light, designed by Esa Vesmanen.

These high quality Finom lights are made in Finland out of durable Finnish birch plywood.

Contents of the package:

Lampshade, wooden shade holder, bulb, lamp holder and cable, two screws, shade ring, axis, login pin, three legs .

Size of the assembled product in centimeters:



## Instructions for assembly:

See also the Finom lights assembly videos:  
<http://finomlights.com/video/>

Carefully remove the parts from the package.

1. Carefully spread the wooden shade holder **C** according to the picture and place it around the lamp holder **A**.

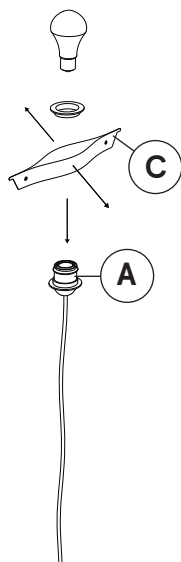
2. Rotate part **B** so that it locks the wooden shade holder to the lamp holder. Remove screws **D** from the package, open them and attach them through the holes in the wooden shade holder. The legs of the light will be attached using them.

You can add the bulb **E** right now or later.

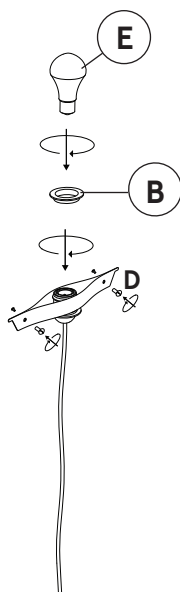
3. The assembled inner part of the shade now looks like this.

4. Attach axis **F** to the leg **H**. Lock the plug into place by inserting locking pin **G** through both the leg and the plug.

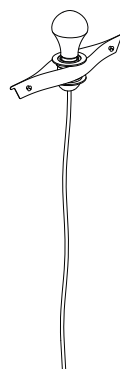
1.



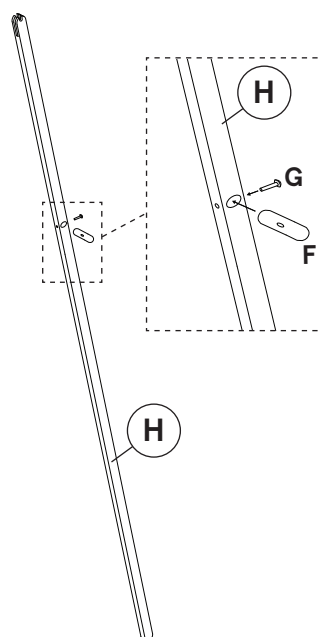
2.



3.



4.



## Instructions for assembly:

5. Carefully open the opening legs I according to the picture. In the legs I there is a slot where the axis will slide up to the hole in the leg H. Now the tripod leg is ready for the inner part of the lamp.

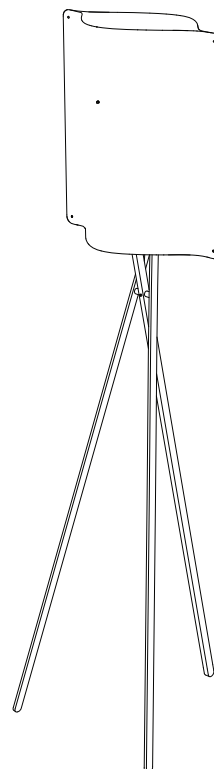
6. Next attach the shade's inner part, which you assembled earlier, into the grooves of the top parts of the tripod legs. The shade holder goes into the grooves and the screws go into the holes.

7. Open the shade J enough to place the legs and inner part inside to it, so that the ends of the shade holder K go through the holes in the shade.

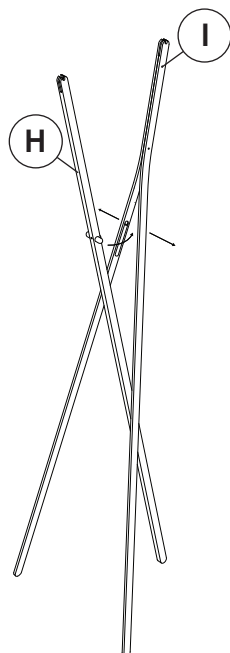
8. Press gently with both hands at the vertical edge of the shade so that the two sheets comes together. Do this for the both vertical sides. Finom lamp shade will give a smooth "pop" sound when the sheets are pushed together. The sound is normal and the light will not break of it.

You can now use the light!

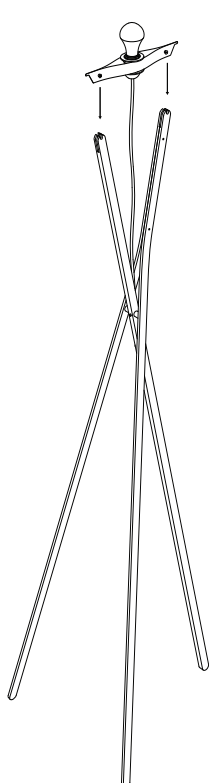
We recommend that you use energy saving fluorescent lights or LED light bulbs with an output of 3,500-4,200 Kelvin.



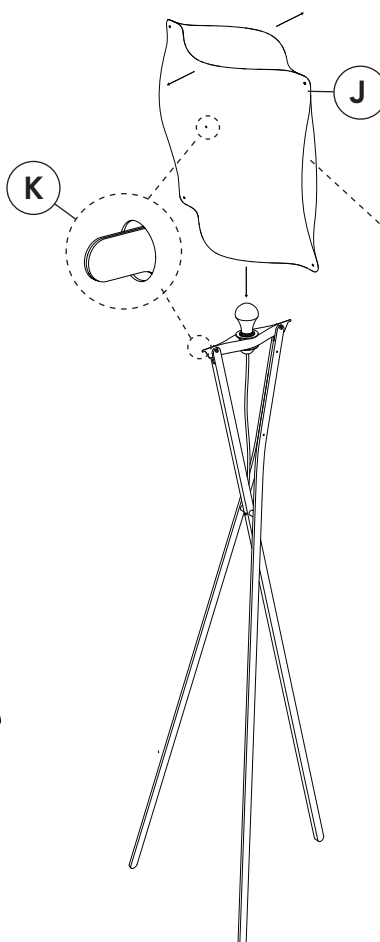
5.



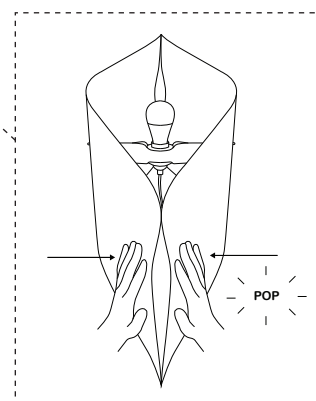
6.



7.



8.



CE  IP20



## Thank you!

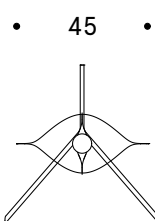
We're happy that you have chosen the Finom light, designed by Esa Vesmanen.

These high quality Finom lights are made in Finland out of durable Finnish birch plywood.

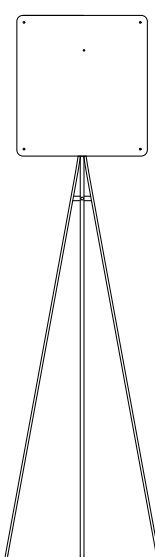
Contents of the package:

Lampshade, wooden shade holder, bulb, lamp holder and cable, two screws, shade ring, axis, login pin, three legs .

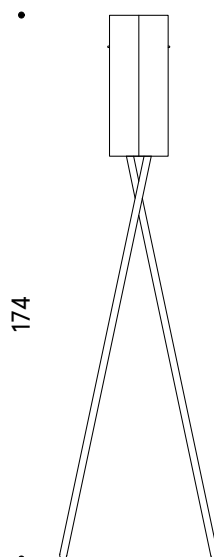
Size of the assembled product in centimeters:



• 20 •



• 53 •



174

• 43 •

## Instructions for assembly:

See also the Finom lights assembly videos:  
<http://finomlights.com/video/>

Carefully remove the parts from the package.

1. Carefully spread the wooden shade holder **C** according to the picture and place it around the lamp holder **A**.

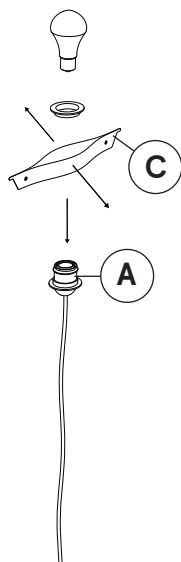
2. Rotate part **B** so that it locks the wooden shade holder to the lamp holder. Remove screws **D** from the package, open them and attach them through the holes in the wooden shade holder. The legs of the light will be attached using them.

You can add the bulb **E** right now or later.

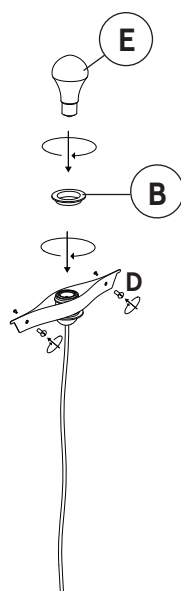
3. The assembled inner part of the shade now looks like this.

4. Attach axis **F** to the leg **H**. Lock the plug into place by inserting locking pin **G** through both the leg and the plug.

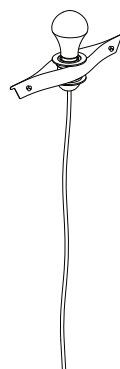
1.



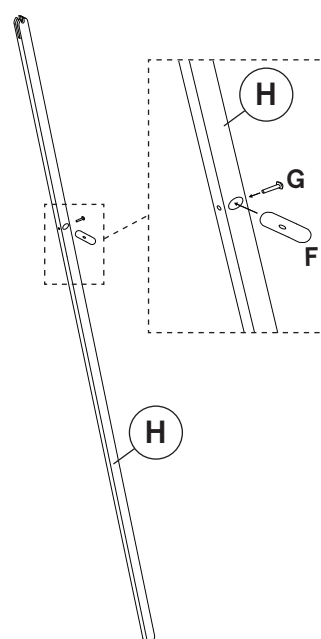
2.



3.



4.



## Instructions for assembly:

5. Carefully open the opening legs I according to the picture. In the legs I there is a slot where the axis will slide up to the hole in the leg H. Now the tripod leg is ready for the inner part of the lamp.

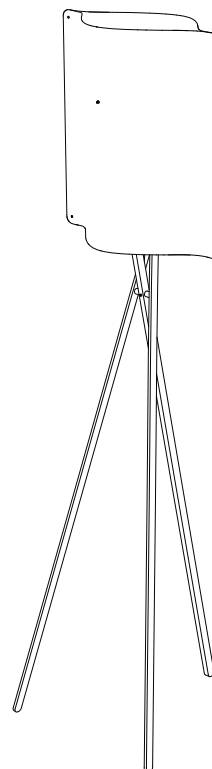
6. Next attach the shade's inner part, which you assembled earlier, into the grooves of the top parts of the tripod legs. The shade holder goes into the grooves and the screws go into the holes.

7. Open the shade J enough to place the legs and inner part inside to it, so that the ends of the shade holder K go through the holes in the shade.

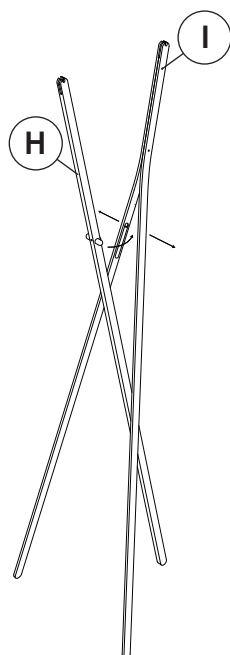
8. Press gently with both hands at the vertical edge of the shade so that the two sheets comes together. Do this for the both vertical sides. Finom lamp shade will give a smooth "pop" sound when the sheets are pushed together. The sound is normal and the light will not break of it.

You can now use the light!

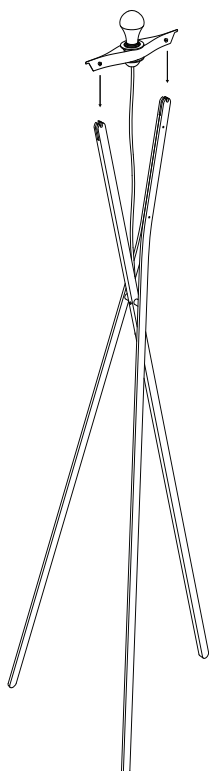
We recommend that you use energy saving fluorescent lights or LED light bulbs with an output of 3,500-4,200 Kelvin.



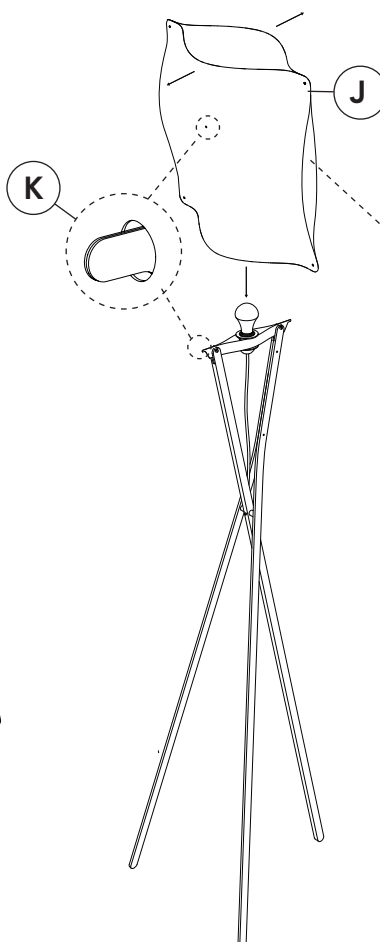
5.



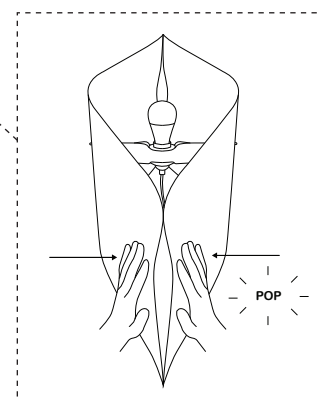
6.



7.



8.



CE  IP20

## Thank you!

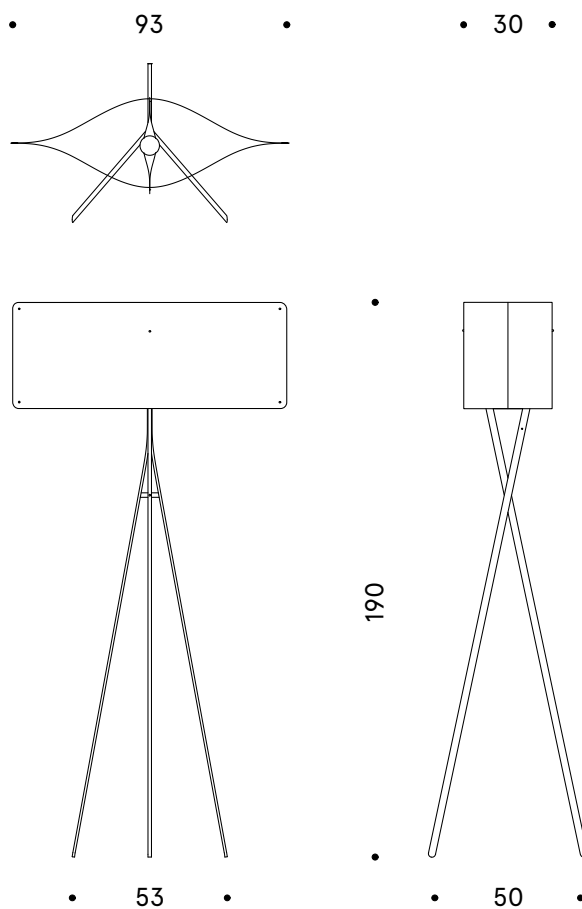
We're happy that you have chosen the Finom light, designed by Esa Vesmanen.

These high quality Finom lights are made in Finland out of durable Finnish birch plywood.

Contents of the package:

Lampshade, wooden shade holder, bulb, lamp holder and cable, two screws, shade ring, axis, login pin, three legs .

Size of the assembled product in centimeters:



## Instructions for assembly:

See also the Finom lights assembly videos:  
<http://finomlights.com/video/>

Carefully remove the parts from the package.

1. Carefully spread the wooden shade holder **C** according to the picture and place it around the lamp holder **A**.

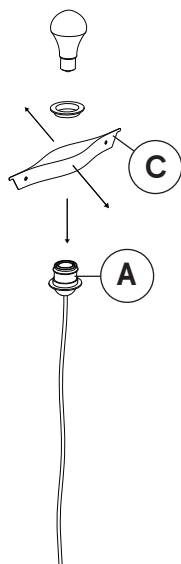
2. Rotate part **B** so that it locks the wooden shade holder to the lamp holder. Remove screws **D** from the package, open them and attach them through the holes in the wooden shade holder. The legs of the light will be attached using them.

You can add the bulb **E** right now or later.

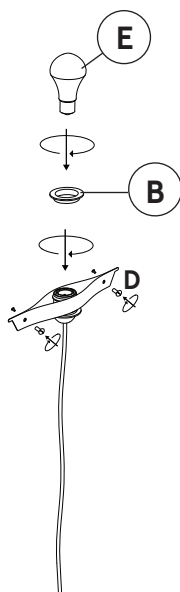
3. The assembled inner part of the shade now looks like this.

4. Attach axis **F** to the leg **H**. Lock the plug into place by inserting locking pin **G** through both the leg and the plug.

1.



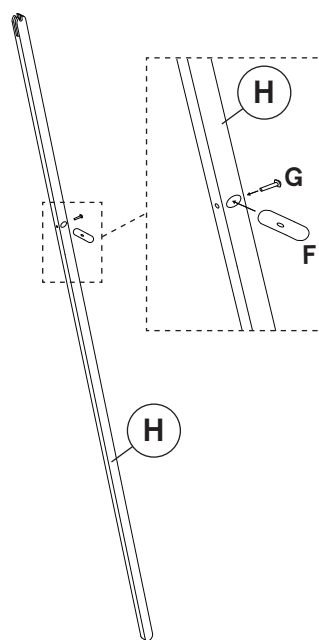
2.



3.



4.



## Instructions for assembly:

5. Carefully open the opening legs I according to the picture. In the legs I there is a slot where the axis will slide up to the hole in the leg H. Now the tripod leg is ready for the inner part of the lamp.

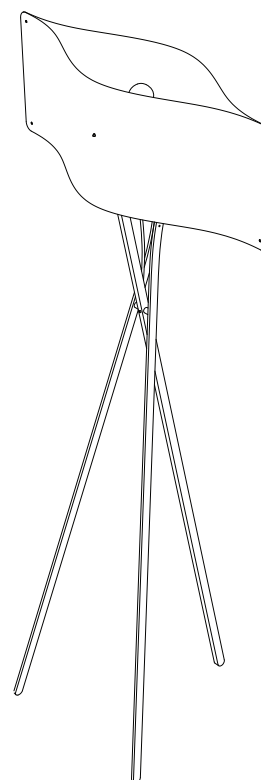
6. Next attach the shade's inner part, which you assembled earlier, into the grooves of the top parts of the tripod legs. The shade holder goes into the grooves and the screws go into the holes.

7. Open the shade J enough to place the legs and inner part inside to it, so that the ends of the shade holder K go through the holes in the shade.

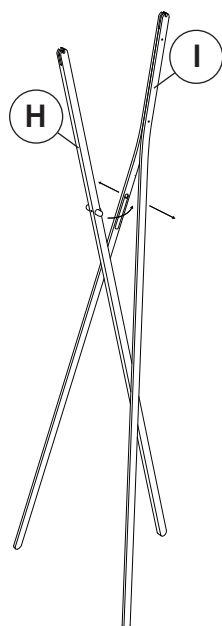
8. Press gently with both hands at the vertical edge of the shade so that the two sheets comes together. Do this for the both vertical sides. Finom lamp shade will give a smooth "pop" sound when the sheets are pushed together. The sound is normal and the light will not break of it.

You can now use the light!

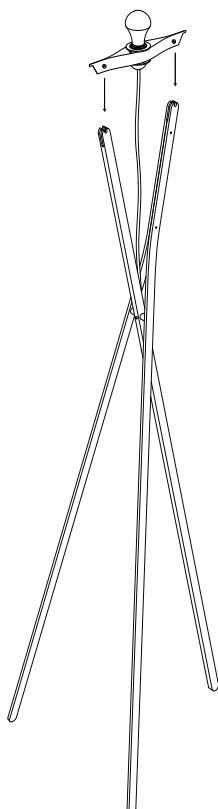
We recommend that you use energy saving fluorescent lights or LED light bulbs with an output of 3,500-4,200 Kelvin.



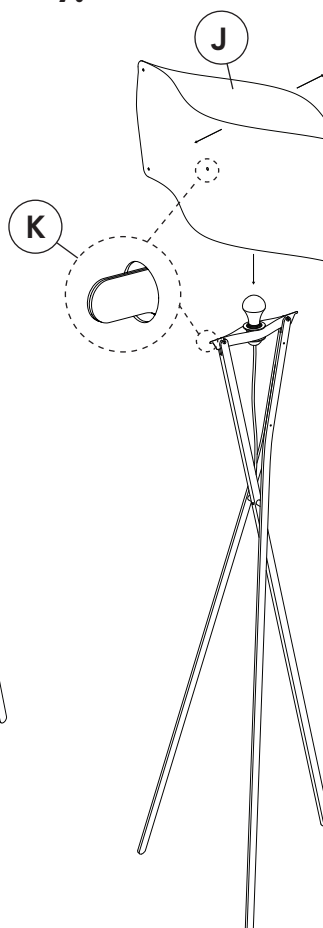
5.



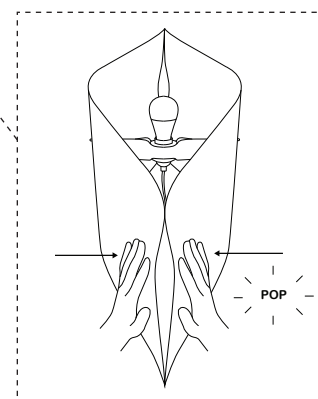
6.



7.



8.



## Thank you!

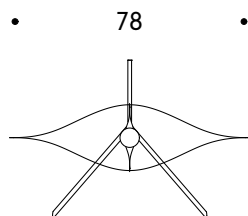
We're happy that you have chosen the Finom light, designed by Esa Vesmanen.

These high quality Finom lights are made in Finland out of durable Finnish birch plywood.

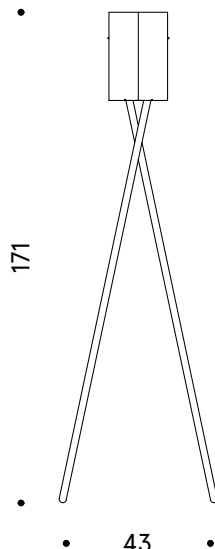
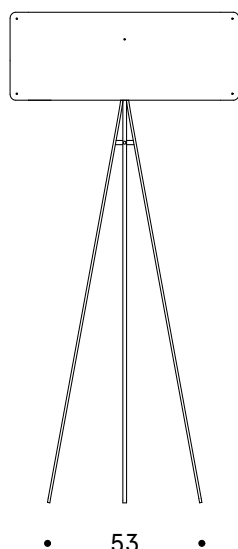
Contents of the package:

Lampshade, wooden shade holder, bulb, lamp holder and cable, two screws, shade ring, axis, login pin, three legs .

Size of the assembled product in centimeters:



• 20 •



## Instructions for assembly:

See also the Finom lights assembly videos:  
<http://finomlights.com/video/>

Carefully remove the parts from the package.

1. Carefully spread the wooden shade holder **C** according to the picture and place it around the lamp holder **A**.

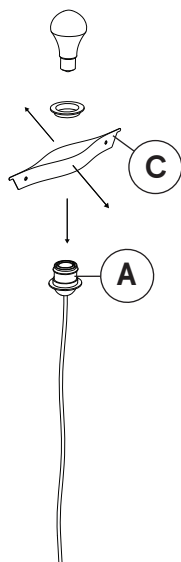
2. Rotate part **B** so that it locks the wooden shade holder to the lamp holder. Remove screws **D** from the package, open them and attach them through the holes in the wooden shade holder. The legs of the light will be attached using them.

You can add the bulb **E** right now or later.

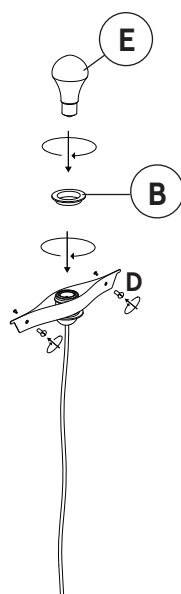
3. The assembled inner part of the shade now looks like this.

4. Attach axis **F** to the leg **H**. Lock the plug into place by inserting locking pin **G** through both the leg and the plug.

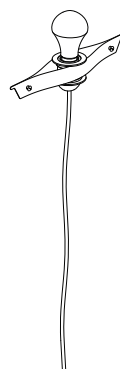
1.



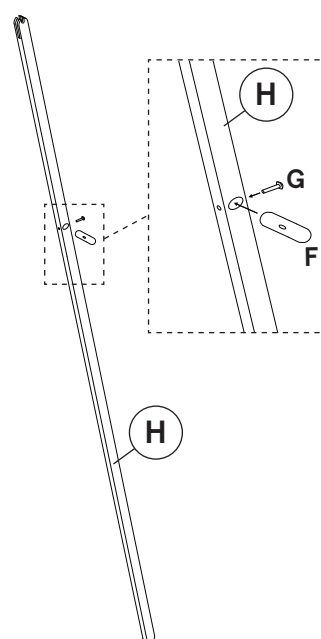
2.



3.



4.





## Instructions for assembly:

5. Carefully open the opening legs I according to the picture. In the legs I there is a slot where the axis will slide up to the hole in the leg H. Now the tripod leg is ready for the inner part of the lamp.

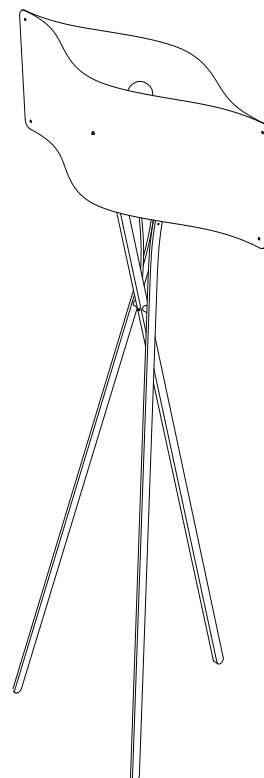
6. Next attach the shade's inner part, which you assembled earlier, into the grooves of the top parts of the tripod legs. The shade holder goes into the grooves and the screws go into the holes.

7. Open the shade J enough to place the legs and inner part inside to it, so that the ends of the shade holder K go through the holes in the shade.

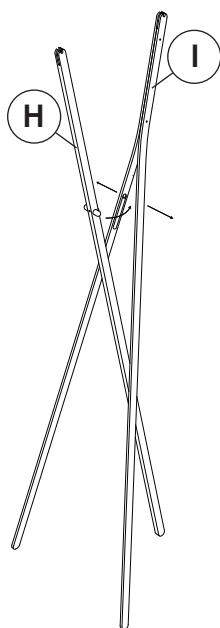
8. Press gently with both hands at the vertical edge of the shade so that the two sheets comes together. Do this for the both vertical sides. Finom lamp shade will give a smooth "pop" sound when the sheets are pushed together. The sound is normal and the light will not break of it.

You can now use the light!

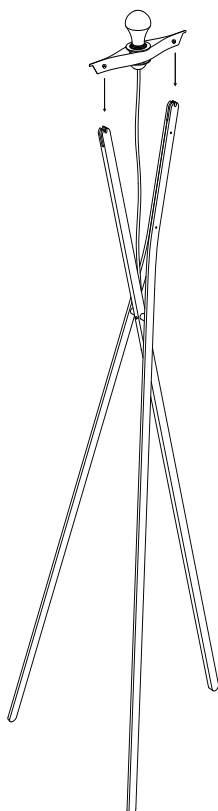
We recommend that you use energy saving fluorescent lights or LED light bulbs with an output of 3,500-4,200 Kelvin.



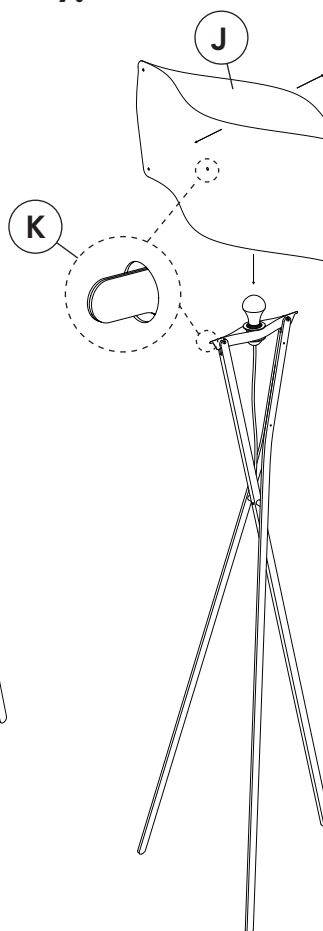
**5.**



**6.**



**7.**



**8.**

