

FINOM LIGHTS

Product card

FINOM

FINOM Square Pendant -lights

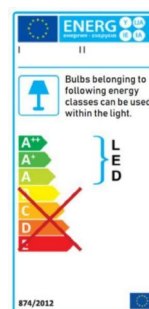
The timeless and unique FINOM designer lighting series is handmade in Finland.

Lights are available as pendants and floor models in several sizes, shapes and colours.

They are easy to assemble without special tools.

The lights provide work and mood lighting for homes and public spaces.

- Shades made of thin transparent birch plywood
- Plywood comes from a PEFC certified supplier
- Floor light legs made of ash tree
- LED bulb specs E27, 220-240 V and 50 Hz
- Energy class A++, A+ or A
- Colour temperature 4000 K (recommended)
- Luminous power 1050-1520 lm
- Bulb lifetime 25,000 hours
- IP Code IP20
- Fabric covered wires
- Floor lights have a foot switch and a Type F plug (CEE 7/4, "Schuko")
- 12 month warranty
- Made in Finland



PRODUCT DATA

	SPS	SPSB	SPL	SPLB
Product code	10011101800111	1001111990511	10011301800111	1001131990511
Product number	Small	Small	Large	Large
Size (Square Pendant)	Nature	Black	Nature	Black
Colour	Birch plywood	Birch plywood	Birch plywood	Birch plywood
Shade material	-	-	-	-
Leg material	45x20x48cm	45x20x48cm	55x30x58cm	55x30x58cm
Measurements (length x width x height)	1,2 kg	1,2 kg	1,2 kg	1,2 kg
Gross weight	0,4 kg	0,4 kg	0,4 kg	0,4 kg
Net weight	+5 ... +55	+5 ... +55	+5 ... +55	+5 ... +55
Usage temperature	35%...55%	35%...55%	35%...55%	35%...55%
Humidity	Pendant	Pendant	Pendant	Pendant
Installation	default Wago	default Wago	default Wago	default Wago
Connectors (Wago or ceiling plug)	LED	LED	LED	LED
Bulb	E27	E27	E27	E27
Base	A++, A+, A	A++, A+, A	A++, A+, A	A++, A+, A
Energy class	IP20	IP20	IP20	IP20
IP Code	2	2	2	2
Protection class	220-240 V	220-240 V	220-240 V	220-240 V
Voltage	10 W	13 W	10 W	13 W
Power	1050 lm	1520 lm	1050 lm	1520 lm
Lumen	4000 K	4000 K	4000 K	4000 K
Colour temperature	> 83	> 83	> 83	> 83
CRI	25,000 hours	25,000 hours	25,000 hours	25,000 hours
Bulb lifetime	Default No	Default No	Default No	Default No
Dimmable Yes/No (by request)	12 months	12 months	12 months	12 months
Warranty				

FINOM is a registered trademark and design patented | www.finomlights.com | info@finomlights.com

ASSEMBLY

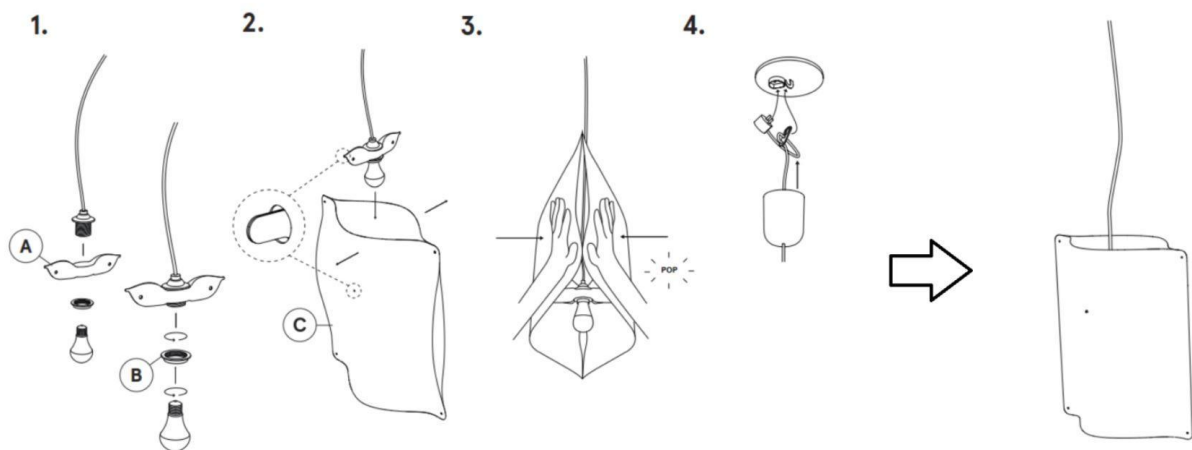
Before starting assembly, see our instruction videos at finomlights.com/video/

Spread part A (the wooden shade holder, inner part) carefully according to the picture and place it around the lamp holder. Rotate part B, the ring so that it locks the wooden shade holder to the lamp holder. You can add the LED bulb now.

Spread the shade C from the middle, just enough to place the wooden shade holder inside the shade. Make sure that the ends of the shade holder go through the holes in the shade.

Press gently with both hands at the vertical edge of the shade so that the two sheets comes together. Do this for the both vertical sides. The lamp shade will give a smooth "pop" sound when the sheets are pushed together. The sound is normal and the light will not break of it.

Attach the light to the ceiling using the cable hook and the electric plug. Then lift up the plastic cover over the plug.



INSTRUCTIONS FOR CARE

The light can be cleaned lightly with a dry microfibre cloth. Remove the shade from the holder before cleaning. Do not use a wet or moist cloth, as this may result in spots on the shade.