

### FINOM Tall Pendant -lights

The timeless and unique FINOM designer lighting series is handmade in Finland.

Lights are available as pendants and floor models in several sizes, shapes and colours.

They are easy to assemble without special tools.

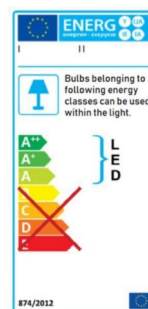
The lights provide work and mood lighting for homes and public spaces.

- Shades made of thin transparent birch plywood
- Plywood comes from a PEFC certified supplier
- Floor light legs made of ash tree
- LED bulb specs E27, 220-240 V and 50 Hz
- Energy class A++, A+ or A
- Colour temperature 4000 K (recommended)
- Luminous power 1050-1520 lm
- Bulb lifetime 25,000 hours
- IP Code IP20
- Fabric covered wires
- Floor lights have a foot switch and a Type F plug (CEE 7/4, "Schuko")
- 12 month warranty
- Made in Finland



### PRODUCT DATA

	TPM	TPMB
Product code		
Product number	10021201800111	1002121990511
Size (Tall Pendant)	Medium	Medium
Colour	Nature	Black
Shade material	Birch plywood	Birch plywood
Leg material	-	-
Measurements (length x width x height)	42x20x62cm	42x20x62cm
Gross weight	1,2 kg	1,2 kg
Net weight	0,4 kg	0,4 kg
Usage temperature	+5 ... +55	+5 ... +55
Humidity	< 45%	< 45%
Installation	Pendant	Pendant
Connectors (Wago or ceiling plug)	default Wago	default Wago
Bulb	LED	LED
Base	E27	E27
Energy class	A++, A+, A	A++, A+, A
IP Code	IP20	IP20
Protection class	2	2
Voltage	220-240 V	220-240 V
Power	10 W	13 W
Lumen	1050 lm	1520 lm
Colour temperature	4000 K	4000 K
CRI	> 83	> 83
Bulb lifetime	25,000 hours	25,000 hours
Dimmable Yes/No (by request)	Default No	Default No
Warranty	12 months	12 months



### ASSEMBLY

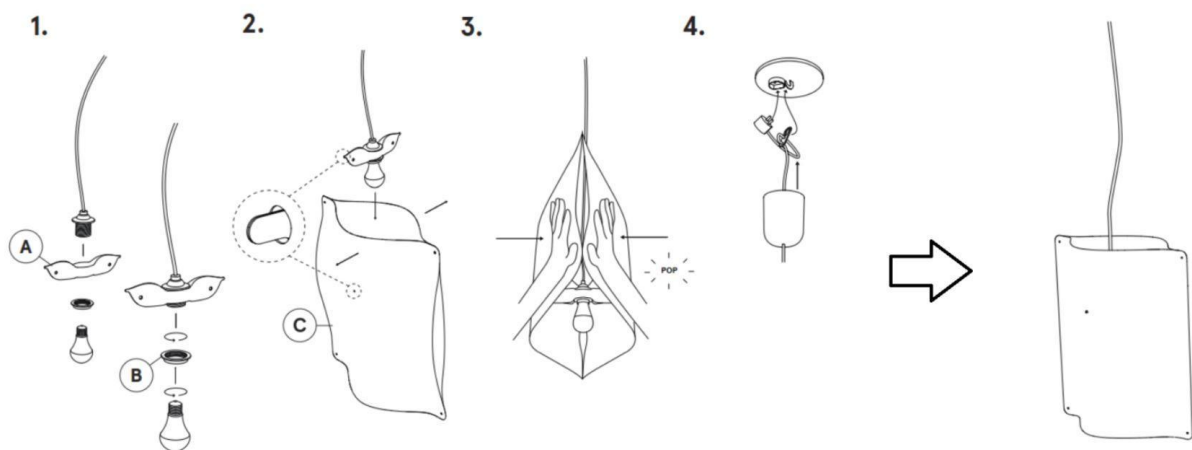
Before starting assembly, see our instruction videos at [finomlights.com/video/](http://finomlights.com/video/)

Spread part A (the wooden shade holder, inner part) carefully according to the picture and place it around the lamp holder. Rotate part B, the ring so that it locks the wooden shade holder to the lamp holder. You can add the LED bulb now.

Spread the shade C from the middle, just enough to place the wooden shade holder inside the shade. Make sure that the ends of the shade holder go through the holes in the shade.

Press gently with both hands at the vertical edge of the shade so that the two sheets comes together. Do this for the both vertical sides. The lamp shade will give a smooth "pop" sound when the sheets are pushed together. The sound is normal and the light will not break of it.

Attach the light to the ceiling using the cable hook and the electric plug. Then lift up the plastic cover over the plug.



### INSTRUCTIONS FOR CARE

The light can be cleaned lightly with a dry microfibre cloth. Remove the shade from the holder before cleaning. Do not use a wet or moist cloth, as this may result in spots on the shade.